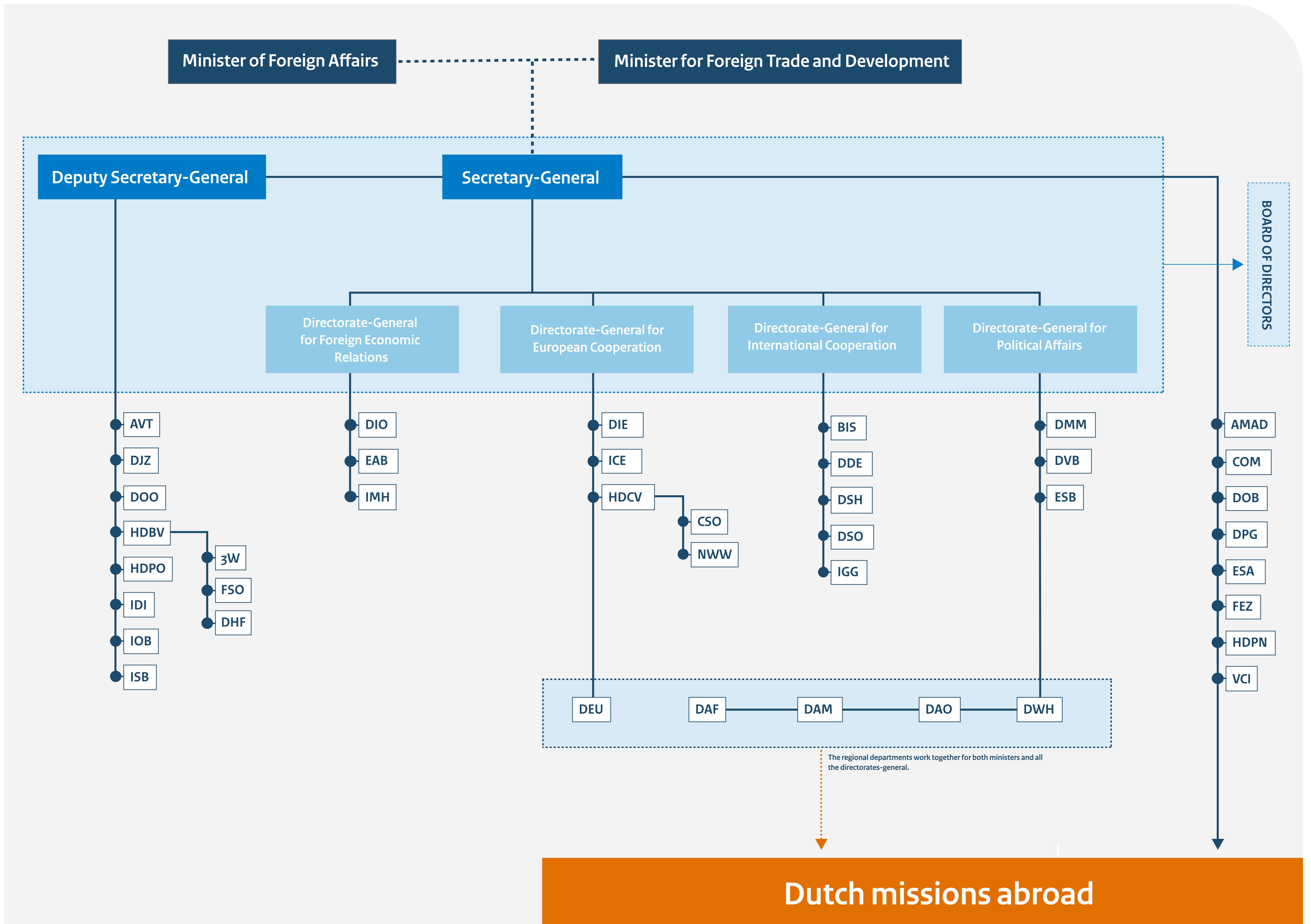




Ministry of Foreign Affairs

Organisational chart



Abbreviations in full in alphabetical order:

3W:	WorldWide Working
AMAD:	Ambassadors at Large
AVT:	Translation Department
BIS:	Office for International Cooperation
COM:	Communications Department
CSO:	Consular Service Organisation
DAF:	Sub-Saharan Africa Department
DAM:	North Africa and Middle East Department
DAO:	Asia and Oceania Department
DDE:	Sustainable Economic Development Department
DEU:	Europe Department
DHF:	Housing and Real Estate Worldwide Department
DIE:	European Integration Department
DIO:	International Enterprise Department
DJZ:	Legal Affairs Department
DMM:	Multilateral Organisations and Human Rights Department
DOB:	Executive Support Department
DOO:	Open Government Department
DPG:	Protocol and Host Country Affairs Department
DSH:	Stabilisation and Humanitarian Aid Department
DSO:	Social Development Department
DVB:	Security Policy Department
DWH:	Western Hemisphere Department
EAB:	Economic Advice and Policy Development Department
ESA:	Strategic Policy Unit
ESB:	Sanctions Policy Unit
FEZ:	Financial and Economic Affairs Department
FSO:	Financial Service Organisation
HDBV:	Operational Management Branch
HDCV:	Consular and Visa Affairs Department
HDPN:	Diplomatic Missions Department
HDPO:	Human Resources Department
ICE:	International Cultural Policy Unit
IDI:	Information and Digital Innovation Department
IGG:	Inclusive Green Growth Department
IMH:	International Trade Policy and Economic Governance Department
IOB:	Policy and Operations Evaluation Department
ISB:	Inspection, Risk Analysis and Advisory Unit
ISB:	Inspection, Risk Analysis and Advisory Unit
NWW:	Netherlands Worldwide
VCI:	Security, Crisis Coordination and Integrity Department



Legend

- Political leaders
- Senior civil servants
- Directorates-General
- Dutch missions abroad