



# Reception of asylum seekers in the Netherlands

## Start of the asylum procedure



Depending on the available reception capacity, the asylum seeker is placed in:

### Asylum seekers' centre

OR

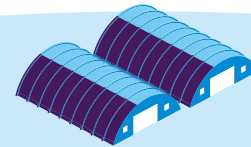
### Emergency reception

OR

### Crisis reception



Regular reception centre



Temporary reception in the event of a shortage in asylum seekers' centres. For example in pavilions, multi-purpose halls, holiday parks



Reception of a very temporary nature (in principle, for a maximum of 72 hours). For example, reception in sport centres. Organisation at a regional level, by the Safety Regions.

## Application is granted

asylum seeker receives a (temporary) residence permit

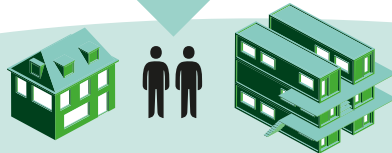


## Request was rejected



## Housing in municipality

Permanent or temporary accommodation is possible  
For example through:



- regular accommodation in the (subsidized) rented sector
- additional accommodation in refurbished empty (office) buildings, in mobile living units or other facilities such as holiday homes.

For this, the municipal authorities can make use of special schemes (subsidy scheme for accommodation of permit holders and the accelerated municipal housing scheme).

## Return

Voluntary or forced



Temporary permit has been revoked  
(for example, because protection is no longer needed)